

STANDARD EQUIPMENT

ISO standard cabin

- Cabin ROPS(ISO 3471)
- FOPS(ISO 3449)
- TOPS(ISO 12117)
- All-weather steel cab with all-around visibility
- Safety glass windows
- Rise-up type windshield wiper
- Sliding fold-in front window
- Sliding side window
- Lockable door
- Accessory box & Ash-tray

Centralized monitoring

- Engine speed
- Gauges
- Fuel level gauge

- Engine coolant temperature gauge
- Warning
- Fuel level
- Engine oil pressure
- Engine coolant temperature
- Hyd. oil temperature
- Low battery
- Air cleaner closing
- Fuel prefilter

Door and cab locks, one key

- AM/FM radio and CD/MP3 with remote control
- Two outside rear view mirrors
- Fully adjustable suspension seat with seat belt
- Console box tilting system(LH.)
- Four front working lights

Electric horn

- Battery (1 x 12 V x 100 AH)
- Battery master switch
- 12 volt power supply
- Removable clean out screen for radiator
- Automatic swing brake
- Removable reservoir tank
- Water separator, fuel line
- Counterweight
- Mono boom (3.0 m, 9'10")
- Arm (1.6 m, 5' 3")
- Tires (12.0 x 16.5 - 12PR)
- Blade (1925 x 354mm, 6'4" x 14")
- Starting aid (air grid heater) cold weather
- Viscous fan clutch

OPTIONAL EQUIPMENT

Air-conditioner & heater

Fuel filler pump(35l/min, 9.2 US gpm)

Beacon lamp

Single acting piping kit(breaker, etc)

Double acting piping kit(clamshell, etc)

Accumulator, work equipment lowering

Cabin front, rear work lamp

Quick coupler

Long arm (1.9m, 6' 3")

Narrow bucket(0.07m³, 0.09yd³)

Tool kit

Operator suit

Mechanical suspension seat with heater

* Standard and optional equipment may vary. Contact your Hyundai dealer for more information. The machine may vary according to International standards.

* The photos may include attachments and optional equipment that are not available in your area.

* Materials and specifications are subject to change without advance notice.

* All imperial measurements rounded off to the nearest pound or inch.

PLEASE CONTACT

www.hyundai-ce.com

2010.06 Rev 0

HYUNDAI
HEAVY INDUSTRIES CO.,LTD.
CONSTRUCTION EQUIPMENT

Head Office (Sales Office)
1 JEONHA-DONG, DONG-GU, ULSAN, KOREA TEL: (82) 52-202-7970, 7729, 0971 FAX: (82) 52-202-7979, 7720

Americas Operation: Hyundai Construction Equipment Americas, Inc.
955 ESTES AVENUE, ELK GROVE VILLAGE, IL. 60007, U.S.A. TEL: (1) 847-437-3333 FAX: (1) 847-437-3574

Europe Operation: Hyundai Heavy Industries Europe N.V.
VOSSENDAAL 11, 2440 GEEL, BELGIUM TEL: (32) 14-56-2200 FAX: (32) 14-59-3405

India Operation: Hyundai Construction Equipment India Pvt., Ltd.
PLOT NO.A-2, CHAKAN INDUSTRIAL AREA, VILL.- KHALUMBRE. TALUK.- KHED., DIST.- PUNE 410 501, INDIA
TEL: (91) 21-3530-1700 FAX: (91) 21-3530-1712

We build a better future

Robex

55W-9

With Tier 4 Interim Engine installed



*Photo may include optional equipment.

HYUNDAI
HEAVY INDUSTRIES CO.,LTD.

Pride at Work

Hyundai Heavy Industries strives to build state-of-the-art earthmoving equipment to give every operator maximum performance, more precision, versatile machine preferences, and proven quality. Take pride in your work with Hyundai!

Robex 55w-9

Machine Walk-Around

Rugged Upper and Lower Frame

The upper frame is designed with optimum structural integrity to absorb impact and operational stress. Reinforced lower frame and strengthened fenders provide exceptional strength and longer service life to withstand tough working conditions.

Engine Technology

The fuel-efficient, Tier 4 interim certified Yanmar 4TNV98 engine provides proven, reliable power. This engine is electronically controlled for optimum fuel to air ratio and clean, efficient combustion and provides low noise, anti-restart features.

Efficient Control System

All control devices are arranged for higher productivity and improved operator comfort. Efficient and ergonomic controls allow an operator to control the machine in any working environment. A safety lever on the left-side console is provided to prevent exiting the cabin while hydraulic controls are live.

Advanced Hydraulic System

The R55W-9's advanced hydraulic system includes an arm flow summation system, boom holding system and a swing parking brake for smooth and fine control. Other valuable features include a hydraulic damper in the travel pedal, and a hydraulically lubricated swing reducer with a leak-free grease chamber.

Comfortable and Durable Cabin

The cabin is roomy and ergonomically designed, for reduced noise and good visibility. The cabin frame meets international standard TOPS, ROPS, FOPS ensuring operator safety.

Operator Convenience

Convenient operator features include a suspension seat, excellent visibility, and variable storage space for advanced operator comfort. The newly designed LED cluster provides current information, including engine RPM, engine coolant, fuel level, and electric components. A hydraulic function safety lock and auto diagnostic features are also available. Lock and failure diagnosis functions are also integrated. A powerful air conditioning system and CD/MP3 interface contribute to a productive work environment.

Easy and Simple Maintenance

Wide open access of doors, covers, hoods is designed for easier maintenance. The air cleaner and centralized grease fittings are also integrated for easy service.

Extended Life of Components

Long life components and wear parts, including hydraulic filters, oil, shims, and bushings, help to reduce operating costs.



*Photo may include optional equipment.

Preference

The powerful and sophisticated R55W-9 provides the operator with a large, comfortable operating environment and an ergonomically designed suspension seat with arm rests for an enhanced operating experience. For additional convenience, precision designed joystick controllers and an easy to read monitor provide the operator with quick access to information and machine control.



*Photo may include optional equipment.



Wide Cabin with Excellent Visibility

The newly designed cabin was conceived for more space, a wider field of view and operator comfort. Special attention was given to a clear, open and convenient interior with plenty of visibility on the machine surroundings and the job at hand. This well balanced combination of precision aspects put the operator in the perfect position to work safely and securely.

Operator Comfort

The R55W-9 operator's cab is designed for a comfortable operating experience. An ergonomically designed suspension seat, adjustable arm rests and a spacious environment helps to minimize operator fatigue. Control levers are easily accessible and a instrument display is provided to keep the operator informed on pertinent machine information.

1. A large upper roof glass provides additional visibility and a roller shade is provided to reduce glare and sunlight.
2. An advanced audio system with AM/FM stereo with CD/MP3 interface input, plus remotely located control is perfect for listening to music favorites.
3. A hands-free cell phone function is available for safe and convenient phone use.
4. Ergonomically designed joysticks reduce operator fatigue during the work day.
5. Multiple storage compartments are available for additional convenience.



Enhanced Cabin

Hyundai R55W-9 is equipped for convenience and productivity.

1. An adjustable position window prevents window movement while operating.
2. A sliding fold-in front window is easily opened and safely stored in an open position to improve ventilation and visibility.
3. A tilt-up left side control console provides easier entrance and exit from the cab.
4. A power climate control system provides the operator with optimum air temperature.



Operator - Friendly Cluster

The advanced new LED cluster allows the operator to select his personal machine preferences. The monitor displays engine rpm, engine oil temperature, water temperature and information for all electronic devices. Button selections are provided for auto idle mode and max power mode. A security feature is also provided to prevent the machine from starting without a proper password.

Precision & Performance

Innovative hydraulic system technologies make the R55W-9 excavator fast, smooth and easy to control. Also R55W-9 is designed for maximum performance to keep the operator working productively.



Excellent Performance

Hyundai's 9 series offers the operator maximized productivity and efficiency. A convenient throttle volume dial with LED light allows the operator to customize engine power according to job requirements. A max power button maximizes machine speed and power for maximum production. The R55W-9 also features an auto idle system which improves fuel efficiency and reduces cab noise.

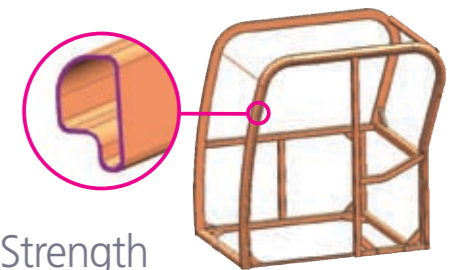
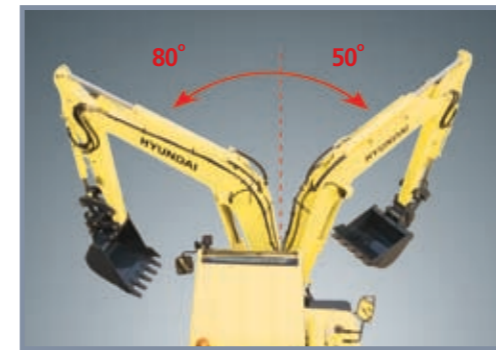
Improved Hydraulic System



To achieve optimum precision, Hyundai redesigned the hydraulic system to provide the operator with super fine touch and improved controllability. Improved pump flow control reduces flow when controls are not being used to minimize fuel consumption. Improved spool valves in the control valve are engineered to provide more precise flow to each function with less effort. Improved hydraulic valves, precision-designed variable volume piston pumps, fine-touch pilot controls, and enhanced travel functions make any operator running a 9 series look like a smooth operator. Boom-down flow regeneration and control valve technology are newly improved.

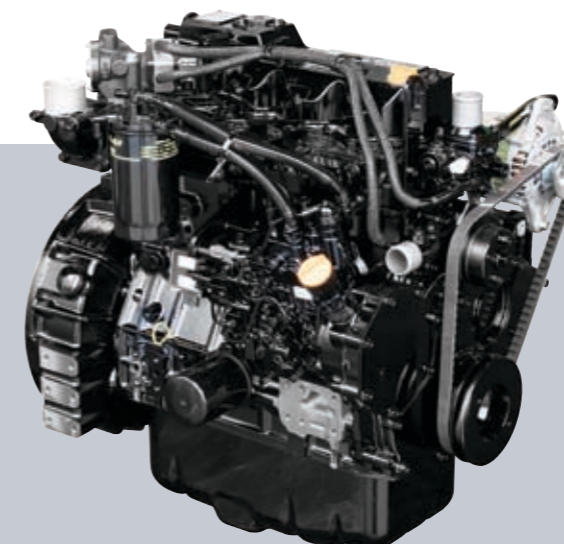
Variable Swing Boom

The R55W-9's boom swing function is designed for efficient work in congested residential and urban areas. The boom can be offset left or right within an operating range. Plus, increased swing torque provides enhanced operating capability on the slope.



Structure Strength

The 9 series cabin structure has been fitted with stronger but slimmer tubing for more safety and improved visibility. Low-stress, high strength steel is integrally welded to form a stronger, more durable upper and lower frame. Structural integrity was tested by way of FEM (Finite Elements Method) analysis and long-term durability tests.



Yanmar 4TNV98

The Highest Engine Power in its Class

Yanmar 4TNV98 engine provides 20.5 kgf.m (148 lbf.ft) of maximum torque with 57 HP at 2,400rpm of rated power. This means the R55W-9 runs with the most power in its class, giving you more power to get the job done.

*Photo may include optional equipment.

Profitability

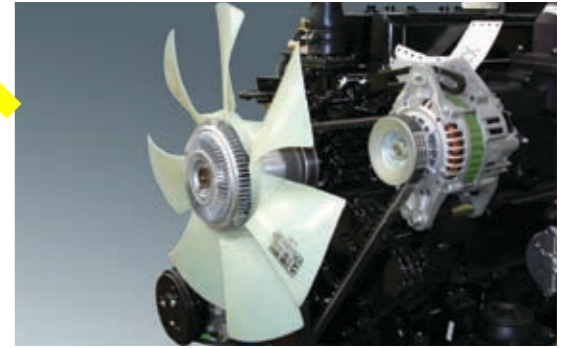
R55W-9 is designed to maximize profitability through improved efficiencies, enhanced service features and longer life components.



*Photo may include optional equipment.

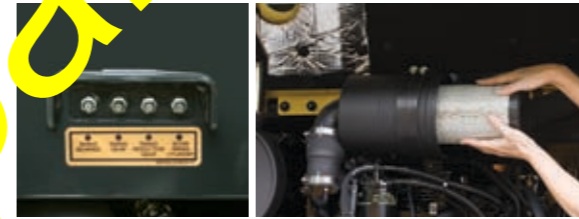
Fuel Efficient

9 series compact excavators are engineered to be extremely fuel efficient. A newly applied cooling fan clutch contributes to reduced noise and improved fuel efficiency.



Improved Durability

The R55W-9 is equipped with reinforced fenders and dozer blade to improve machine performance. R55W-9's fenders applied non-slip plate and additional inside stiffener. A large dozer cylinder cover provides added protection while grading and backfilling.

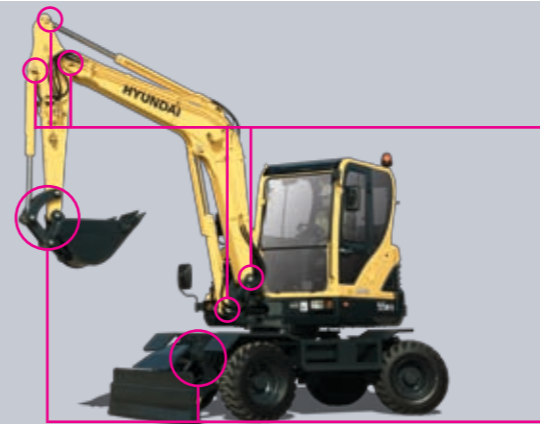


Easy Access

Centralized grease fittings and easy change plastic air cleaner provide faster, easier service and maintenance.

Wide Open Engine hood

A newly designed full-open type engine hood makes service more convenient on the R55W-9.



Extended Life Components

9 series excavators were designed with improved bushings with extended lubrication intervals, wear resistant and noise reducing polymer shims, extended-life hydraulic filters (1,000hr), long-life hydraulic oil (5,000hr), more efficient cooling systems and integrated preheating systems to extend service intervals, minimize operating costs and reduce machine down time.

Specifications

ENGINE

MODEL	YANMAR 4TNV98		
Type	Water cooled, 4 cycle diesel 4 cylinders in line, direct injection, low emission		
Rated flywheel horsepower	SAE	J1995 (gross) J1349 (net)	57 HP (42.5 kW) at 2,400 rpm 55.2 HP (41.2 kW) at 2,400 rpm
	DIN	6271/1 (gross) 6271/1 (net)	57.8 PS (42.5 kW) at 2,400 rpm 56 PS (41.2 kW) at 2,400 rpm
Max. torque	20.5 kgf-m (148 lbf-ft) at 1,550 rpm		
Bore X stroke	98 mm (3.86") x 110 mm (4.33")		
Piston displacement	3,319 cc (203 cu in)		
Batteries	1 x 12 V x 100 AH		
Starting motor	12V-3.0 kW		
Alternator	12V-80 Amp		

HYDRAULIC SYSTEM

MAIN PUMP	
Type	Two variable displacement piston pumps
Max. flow	2 X 55 L/min (14.5 US gpm/12.1 UK gpm)
Sub-pump for pilot circuit	Gear pump
Cross-sensing and fuel saving pump system	

HYDRAULIC MOTORS	
Travel	Two speed axial piston motor with counter balance valve and parking brake
Swing	Axial piston motor with automatic brake

RELIEF VALVE SETTING	
Implement circuits	220 kgf/cm ² (3,130 psi)
Travel circuit	220 kgf/cm ² (3,130 psi)
Swing circuit	220 kgf/cm ² (3,130 psi)
Pilot circuit	30 kgf/cm ² (430 psi)
Service valve	Installed

HYDRAULIC CYLINDERS	
No. of cylinder bore X stroke	Boom: 1-110 x 715 mm (4.3" x 28.1")
	Arm: 1-90 x 850 mm (3.5" x 33.5")
	Bucket: 1-80 x 660 mm (3.1" x 26.0")
	Dozer blade: 1-100 x 189 mm (3.9" x 7.4")

TRAVEL SYSTEM

Max. travel speed	27 km/h (16.8mph)
Gradeability	35° (70%)

CONTROLS

Pilot pressure operated joysticks and pedals with detachable lever provide almost effortless and fatigueless operation.

Pilot control	Two joysticks with one safety lever (LH): Arm and swing (Boom swing) (RH): Boom and bucket (ISO)
Traveling and steering	Pedal and steering wheel
Engine throttle	Electric, Dial type

SWING SYSTEM

Swing motor	Axial pistons motor
Swing reduction	Planetary gear reduction
Swing bearing lubrication	Grease-bathed
Swing brake	Multi wet disc
Swing speed	9.1 rpm

COOLANT & LUBRICANT CAPACITY

Re-filling	liter	US gal	UK gal
Fuel tank	125.0	33.0	27.5
Engine coolant	9.5	2.5	2.1
Engine oil	11.6	3.1	2.6
Swing device - gear oil	1.5	0.4	0.3
Hydraulic tank	70.0	18.5	15.4
Hydraulic system	120.0	31.7	26.4
Axle(Front/Rear)	5.3/5.3	1.4/1.4	1.2/1.2

AXLES & TIRES

Full floating front axle is supported by center pin for oscillation.
It can be locked by oscillation lock cylinders.
Rear axle is fixed on the lower chassis.

Tires	12.0 x 16.5-12PR, single
-------	--------------------------

DOZER BLADE

Pin-on type dozer blade is standard. Dozer blade is a very useful addition for leveling and back filling or clean-up work.

Dozer blade	Width x Height: 1,925 x 355mm(6' 4" x 1' 2")
	Max. lifting above ground level: 445mm(17.5")
	Max. depth below ground level: 140mm(5.5")

OPERATING WEIGHT (APPROXIMATE)

Operating weight, including 3,000 mm (9' 10") boom, 1,600 mm (5' 3") arm, SAE heaped 0.18 m³ (0.24 yd³) digging bucket, lubricant, coolant, full fuel tank, hydraulic tank and the standard equipment.

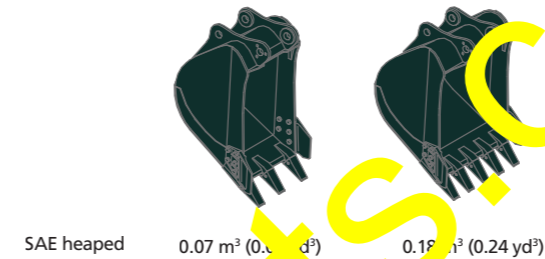
MAJOR COMPONENT WEIGHT	
Upperstructure	2,680 kg (5,910 lb)
Counterweight	210 kg (460 lb)
Mono boom(with arm cylinder)	310 kg (680 lb)

OPERATING WEIGHT	
Operating weight	5,550 kg (12,240 lb)

·Mono boom with blade

BUCKETS

Capacity		Width		Weight
SAE heaped	CECE heaped	Without cutters	With side cutters	
0.07 m ³ (0.09 yd ³)	0.06 m ³ (0.08 yd ³)	315 mm(12.4")	360 mm(14.2")	115 kg(255 lb)
0.18 m ³ (0.24 yd ³)	0.15 m ³ (0.20 yd ³)	670 mm(26.4")	740 mm(29.1")	170 kg(375 lb)



SAE heaped 0.07 m³ (0.09 yd³) CECE heaped 0.15 m³ (0.24 yd³)

DIGGING FORCE

Arm	Length	1,600 mm (5' 3")	1,900 mm (6' 3")
	Weight	210 kg (460 lb)	230 kg (510 lb)
Bucket digging force	SAE	37.7 kN	37.7 kN
		3,850 kgf	3,850 kgf
	ISO	8,490 lbf	8,490 lbf
		42.4 kN	42.4 kN
Arm crowd force	SAE	4,330 kgf	4,330 kgf
		9,550 lbf	9,550 lbf
	ISO	28.4 kN	25.5 kN
		2,900 kgf	2,600 kgf
ISO	6,390 lbf	5,730 lbf	
	31.9 kN	28.7 kN	
		3,260 kgf	2,930 kgf
		7,190 lbf	6,460 lbf

*Arm weight including cylinder and linkage.

Lifting Capacity

Rating over-front Rating over-side or 360 degree

Booms : 3,000 mm (9' 10") / Arm : 1.6 m (5' 3") / Bucket : 0.18m ³ (0.24yd ³) SAE heaped / Dozer blade down with 210kg (460 lb) counterweight.												
Load point height m (ft)		Load radius				At max. reach						
		2.0 m (7 ft)		3.0 m (10 ft)		4.0 m (13 ft)		5.0 m (16 ft)		Capacity		Reach
		Rating over-front	Rating over-side or 360 degree	Rating over-front	Rating over-side or 360 degree	Rating over-front	Rating over-side or 360 degree	Rating over-front	Rating over-side or 360 degree	Rating over-front	Rating over-side or 360 degree	m (ft)
5.0 m (16 ft)	kg									*960	*960	4.47
	lb									*2120	*2120	(14.7)
4.0 m (13 ft)	kg					*1020	*1020			*990	720	5.26
	lb					*2250	*2250			*2180	1590	(17.3)
3.0 m (10 ft)	kg					*1150	1120	*990	760	*1020	620	5.69
	lb					*2540	2470	*2180	1680	*2250	1370	(18.7)
2.0 m (7 ft)	kg					*1900	1690	*1400	1070	*1200	740	5.86
	lb					*4190	3730	*3090	2360	*2650	1630	(19.2)
1.0 m (3 ft)	kg					*2500	1580	*1670	1020	*1310	720	5.81
	lb					*5510	3480	*3680	2250	*2890	1590	(19.1)
Ground Line	kg	*2690	*2690	*2720	1530	*1820	990	*1350	700	*1160	620	5.51
	lb	*5930	*5930	*6000	3370	*4010	2180	*2980	1540	*2560	1370	(18.1)
-1.0 m (-3 ft)	kg	*4040	3040	*2610	1520	*1760	980			*1180	740	4.92
	lb	*8910	6700	*5750	3350	*3880	2160			*2600	1630	(16.1)
-2.0 m (-7 ft)	kg	*3400	3100	*2090	1550							
	lb	*7500	6830	*4610	3420							

Lifting Capacity

R55W-9

Rating over-front Rating over-side or 360 degree

Boom : 3.0m (9' 10") / Arm : 1.6 m (5' 3") / Bucket : 0.18m³ (0.24yd³) SAE heaped / Dozer blade up with 210kg (460 lb) counterweight.

Load point height m (ft)		Load radius								At max. reach		
		2.0 m (7 ft)		3.0 m (10 ft)		4.0 m (13 ft)		5.0 m (16 ft)		Capacity	Reach	
												m (ft)
5.0 m (16 ft)	kg lb									*960 *2120	880 1940	4.47 (14.7)
4.0 m (13 ft)	kg lb					*1020 *2250	*1020 *2250			760 1680	650 1430	5.26 (17.3)
3.0 m (10 ft)	kg lb					*1150 *2540	1010 2230	810 1790	690 1520	650 1430	550 1210	5.69 (18.7)
2.0 m (7 ft)	kg lb			1770 3900	1510 3330	1130 2490	960 2120	790 1740	670 1480	610 1340	510 1120	5.86 (19.2)
1.0 m (3 ft)	kg lb			1660 3660	1410 3110	1080 2380	910 2010	760 1680	640 1410	610 1340	510 1120	5.81 (19.1)
Ground	kg lb	*2690 *5930	2630 5800	1610 3550	1360 3000	1040 2290	880 1940	750 1650	630 1390	650 1430	550 1210	5.51 (18.1)
-1.0 m (-3 ft)	kg lb	3210 7080	2650 5840	1600 3530	1350 2980	1040 2290	870 1920	790 1650	660 1390	790 1740	660 1460	4.92 (16.1)
-2.0 m (-7 ft)	kg lb	3270 7210	2700 5950	1630 3590	1380 3040							

Boom : 3.0m (9' 10") / Arm : 1.9 m (6' 3") / Bucket : 0.18m³ (0.24yd³) SAE heaped / Dozer blade down with 210kg (460 lb) counterweight.

Load point height m (ft)		Load radius								At max. reach		
		2.0 m (7 ft)		3.0 m (10 ft)		4.0 m (13 ft)		5.0 m (16 ft)		Capacity	Reach	
												m (ft)
5.0 m (16 ft)	kg lb					*940 *2070	*940 *2070			*880 *1940	840 1850	4.88 (16.0)
4.0 m (13 ft)	kg lb									*910 *2010	650 1430	5.60 (18.4)
3.0 m (10 ft)	kg lb					*1010 *2230	*1010 *2230	*1010 *2230	770 1700	*940 *2070	560 1230	6.00 (19.7)
2.0 m (7 ft)	kg lb	*3000 *6610	*3000 *6610	*1660 *3660	*1660 *3660	*1280 *2820	1080 2380	*1120 *2470	750 1650	*980 *2160	520 1150	6.16 (20.2)
1.0 m (3 ft)	kg lb	*1940 *4280	*1940 *4280	*2330 *5140	1590 3510	*1580 *3480	1020 2250	*1250 *2760	720 1590	*1030 *2270	520 1150	6.10 (20.0)
Ground	kg lb	*2520 *5560	*2520 *5560	*2670 *5890	1520 3350	*1770 *3900	980 2160	*1330 *2930	700 1540	*1070 *2360	560 1230	5.83 (19.1)
-1.0 m (-3 ft)	kg lb	*3580 *7890	3000 6610	*2660 *5860	1500 3310	*1790 *3950	970 2140			*1110 *2450	650 1430	5.92 (17.4)
-2.0 m (-7 ft)	kg lb	*3830 *8440	3050 6720	*2290 *5050	1520 3350	*1490 *3280	980 2160			*1080 *2380	910 2010	4.33 (14.2)
-3.0 m (-10 ft)	kg lb	*2070 *4560	*2070 *4560									

Boom : 3.0m (9' 10") / Arm : 1.9 m (6' 3") / Bucket : 0.18m³ (0.24yd³) SAE heaped / Dozer blade up with 210kg (460 lb) counterweight.

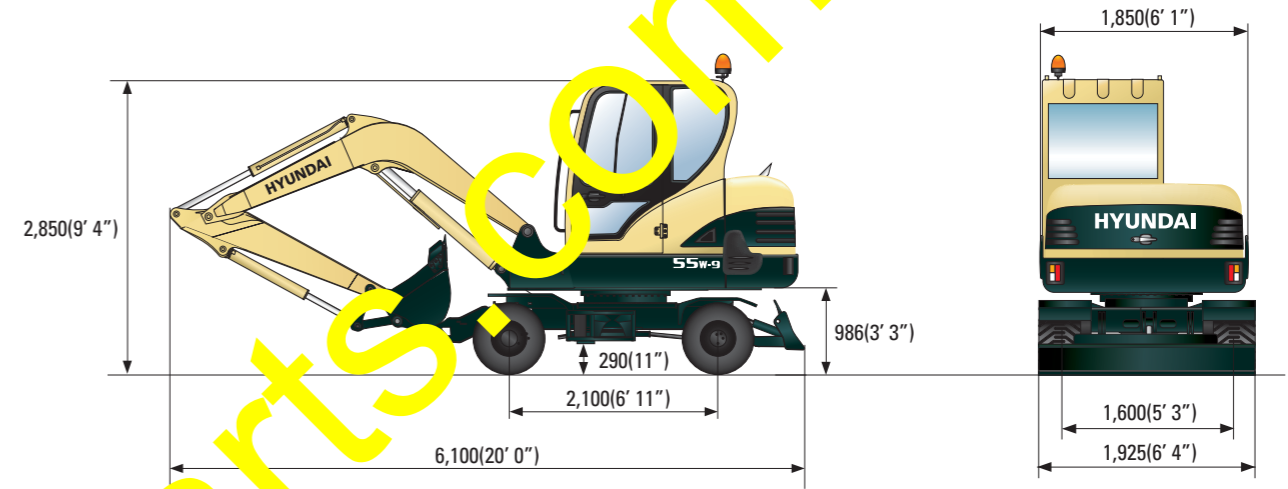
Load point height m (ft)		Load radius								At max. reach		
		2.0 m (7 ft)		3.0 m (10 ft)		4.0 m (13 ft)		5.0 m (16 ft)		Capacity	Reach	
												m (ft)
5.0 m (16 ft)	kg lb					*940 *2070	*940 *2070			*960 *2120	880 1940	4.47 (14.7)
4.0 m (13 ft)	kg lb									690 1520	580 1280	5.60 (18.4)
3.0 m (10 ft)	kg lb					*1010 *2230	*1010 *2230	810 1790	690 1520	600 1320	500 1100	6.00 (19.7)
2.0 m (7 ft)	kg lb	*3000 *6610	2990 6590	*1660 *3660	1540 3400	1140 2510	970 2140	790 1740	670 1480	560 1230	470 1040	6.16 (20.2)
1.0 m (3 ft)	kg lb	*1940 *4280	*1940 *4280	1670 3680	1420 3130	1080 2380	920 2030	760 1800	640 1410	560 1230	460 1010	6.10 (20.0)
Ground	kg lb	*2520 *5560	*2520 *5560	1600 3530	1350 2980	1040 2290	880 1940	750 1650	630 1390	650 1430	550 1210	5.51 (18.1)
-1.0 m (-3 ft)	kg lb	3160 6970	2610 5750	1580 3480	1330 2930	1020 2220	860 1900			690 1520	580 1280	5.29 (17.4)
-2.0 m (-7 ft)	kg lb	3210 7080	2650 5840	1600 3530	1350 2980	1040 2290	870 1920			790 1740	660 1460	4.92 (16.1)
-3.0 m (-10 ft)	kg lb	*2070 *4560	*2070 *4560									

- Lifting capacity is based on SAE J1097, ISO 10567.
- The load point is a hook located on the back of the bucket.
- Lifting capacity of the Robex Series does not exceed 75% of the tipping load with the machine on firm, level ground or 87% of full hydraulic capacity.
- (*) indicates the load limited by hydraulic capacity.

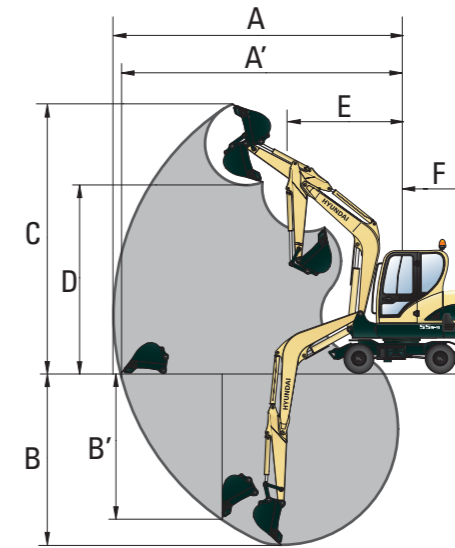
Dimensions & Working Range

R55W-9 DIMENSIONS

unit: mm(ft · in)



R55W-9 WORKING RANGE



unit: mm(ft · in)

Boom length	3,000 (9' 10")	
Arm length	1,600 (5' 3")	1,900 (6' 3")
A Max. digging reach	6,150 (20' 2")	6,430 (21' 1")
A' Max. digging reach on ground	5,980 (19' 7")	6,200 (20' 4")
B Max. digging depth	3,500 (11' 6")	3,800 (12' 6")
B' Max. vertical wall digging depth	2,960 (9' 9")	3,160 (10' 4")
C Max. digging height	6,070 (19' 11")	6,260 (20' 6")
D Max. dumping height	4,340 (14' 3")	4,530 (14' 10")
E Min. swing radius	2,350 (7' 9")	2,350 (7' 9")
F Tail swing radius	1,650 (5' 5")	1,650 (5' 5")