



# Rubber Tracks

New Rubber Tracks for CAT® and NON-CAT® applications. Manufactured from only the finest materials and specifically designed to provide excellent performance under a wide range of working conditions. At CTP we only offer the best in quality and durability when it comes to rubber tracks for our customers.

## Your guarantee of reliable performance and outstanding durability

- ✓ Optimized track geometry for reduced component wear and derailing
- ✓ Precise pitch ensuring perfect sprocket and track engagement plus flawless alignment of steel cables and iron core
- ✓ Fewer track tension adjustments

### ALL ITEM LIST IS AVAILABLE UPON REQUEST:

PLEASE ALLOW 3 BUSINESS DAYS FOR LEAD TIME. FOR MORE DETAILS PLEASE CONTACT ONE OF OUR SALES REPRESENTATIVES.

## Track Loaders -

Part No.	Size	Tread Pattern	Applications
3258624	381x42x100	MTL1	CAT 247, 247B, 247B2, 257, 257B, ASV PT-50, PT-60, RC-50, RC-60, SC-50, ST-50
2208161	457x51x100	MTL2	CAT 287, 287A, 287B, ASV RC-85, RCV, RC-100
3258625	457x51x100	MTL2	CAT 277C, 287C, 297C, ASV PT-80
2387664	457x56x100	MTL2	CAT 267, 267B, 277, 277B, ASV MD-70, POSI-TRAC 2800, POSI-TRAC 2810, POSI-TRACK 4800, POSI-TRAC HD4500, POSI-TRAC HD4520



### DRIVE LUG

- Optimized drive lug geometry for extended wear and superior performance

### HEAVY-DUTY CARCASS

- Optimized ply for better track alignment and rigidity
- Endless single cure technology for even ply and cable placement
- Heavy-duty synthetic fiber provides rockpuncture resistance

### TREAD PATTERN



**MTL1**

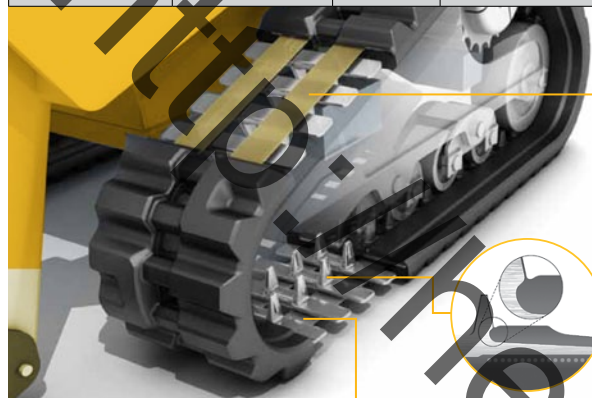
**MTL2**

Tread patterns designed for maximum traction, flotation and durability.

\*Other part no. not included in the list are available. Please contact your sales representative if you have any questions. Part Numbers are used for reference purposes only

## Compact Track Loaders -

Part No.	Size	Tread Pattern	Applications
320X86X49	320x86x49	B	<b>BOBCAT</b> T180, T180H, T190, 190H; <b>CORMIDI</b> Ironcat 145
320X86X52	320x86x52	B	<b>GEHL</b> CTL60; <b>MUSTANG</b> MTL16; <b>TAKEUCHI</b> TL130, TL230
450X86X55	450x86x55	B	<b>BOBCAT</b> T250, T250H, T300H, 320; <b>NEW HOLLAND</b> C185, C190
450X86X60	450x86x60	B	<b>CAT</b> 269C, 279C, 289C, 299C



### STEEL CABLES

Made of high-tensile steel wires resistant to cutting and stretching, allowing for even tension throughout the track

- Unique steel core design improves rubber bonding
- Special coating improves corrosion resistance
- Even cable placement



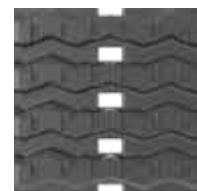
### TRACKGUARD

- Prevents infiltration of water, sand and rocks between the rolling path and iron core
- **Increases** rolling path **durability** by 100%

### IRON CORE

- Produced from superior steel alloy for a track 15% stronger than the competition's

### TREAD PATTERN

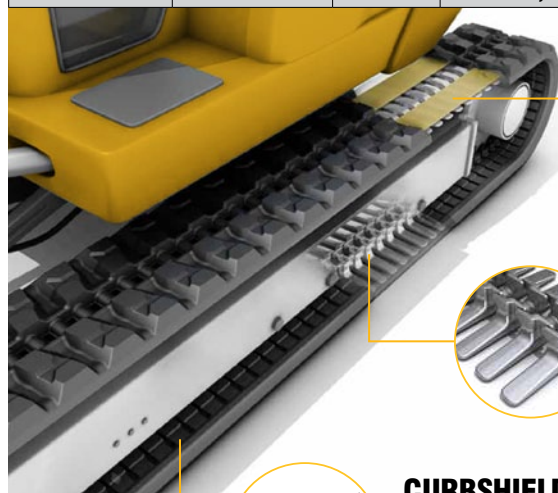


**B**

Tread patterns designed for maximum traction, flotation and durability.

## Mini-Excavators -

Part No.	Size	Tread Pattern	Applications
300X77X55	300x77x55	V1	<b>BOBCAT</b> 331, 334; K028, K030, KH033, KX71-2, KX91-2, KX91-2S, KX91-2S, KX91-2SR, <b>NEW HOLLAND</b> EH27B, <b>NISSAN</b> N 35, S&B X-1, <b>SCHAEFF</b> HR16 (<1995) (>1995)
300X83X55	300x83x55	V1	<b>HITACHI</b> EX 35U, EX 36U, UE 35, ZX 30U-2, ZX 35U-2, <b>JOHN DEERE</b> 35C ZTS, 35 ZTS, 35D; <b>KOMATSU</b> PC 35MR-1 (> 05/04 MFG), PC 30MR-2



### STEEL CABLES

Made of high-tensile steel wires resistant to cutting and stretching, allowing for even tension throughout the track

- Unique steel core design improves rubber bonding
- Special coating improves corrosion resistance
- Even cable placement



### 3S IRON CORE

- Exclusive External 3S Iron Core
- Greatly reduces vibrations for a smoother ride and less noise
- Significantly reduce risk of detracking



### CURBSHIELD

- Edge cutting protection
- Prevent cable and metal bar from damage
- Protect steel bar and rubber adhesion

### TREAD PATTERN



**V1**

Tread patterns designed for maximum traction, flotation and durability.

\*Other part no. not included in the list are available. Please contact your sales representative if you have any questions. Part Numbers are used for reference purposes only